

Design Principles Exercise

Write a couple sentences answering the question posed by each of these design problems.

Which of these two brushes—a or b—has painted the longest stroke?

What formal element does this illusion exploit?



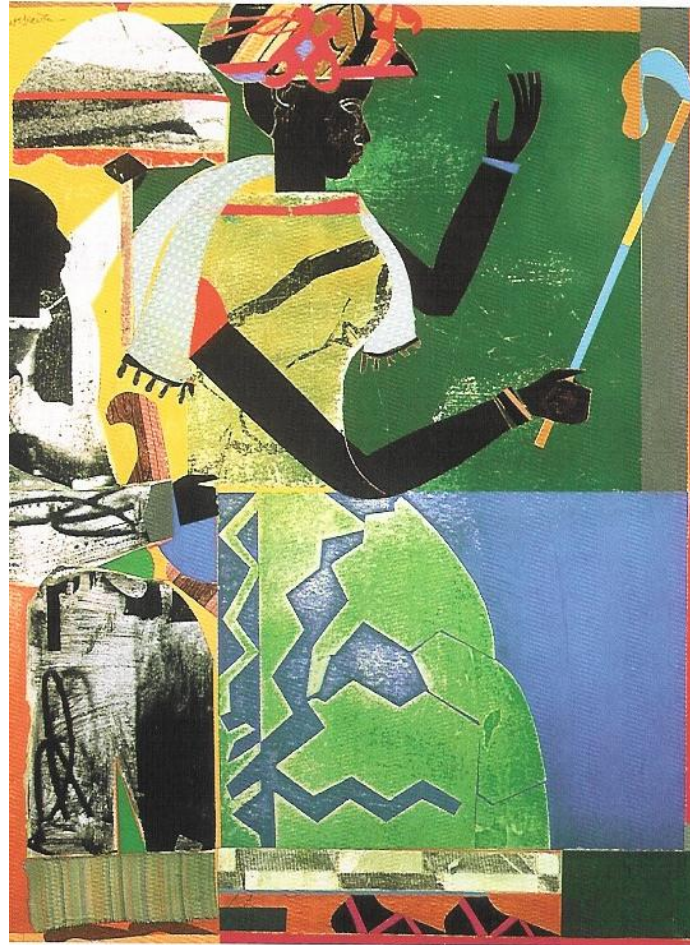
What formal elements does this image exploit?





What formal elements does this puzzle painting, *Old Barn*, by Rusty Rust exploit?

What formal elements does this image exploit?



Romare Bearden

She-ba

1970

Oil on canvas

48" x 36"

What formal elements does this image exploit?



What formal elements does this image exploit?

Hint: The title of this work by Rusty Rust is “The Hidden Tiger”



Proportion

What formal elements does this image exploit?



IT WAS A DARK AND SILLY NIGHT...

...AND AFTER A LONG DAY'S SLEEP, THE OWL GOT INTO HIS CAR AND WENT SHOPPING. THIS IS A COMIC STRIP ABOUT HIS SHOPPING TRIP, BUT SOMEHOW THE CARTOONIST MIXED UP THE PANELS! CAN YOU REARRANGE THEM SO THAT THE STORY MAKES SENSE?

